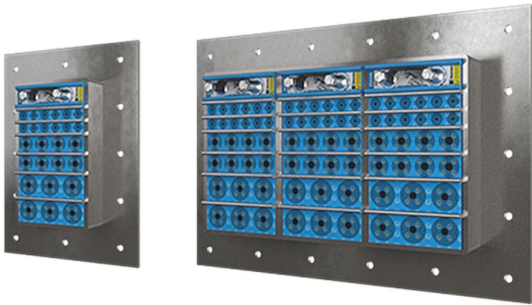


Roxtec G bolted Ex transit

Ex rated transit with flange, for bolting.

The Roxtec G bolted Ex is a high cable density transit that is rated for Ex e and Ex tb areas in temperatures from -60 to +80°C. The frame is attached by bolting and includes a gasket for sealing against the structure.

- Easy to maintain and inspect
- Provides built-in spare capacity



Product characteristics


IP/UL NEMA


Ex rated


EMI protection


Electrical safety


Fire rated

Structure of installation


Cabinets & enclosures


Metal

Mounting type


Bolting

Ratings & certificates

Fire

- E/EI rating according to EN 13501

Tightness

- IP 66/67

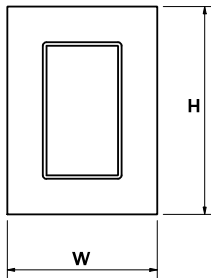
Supports

- Bonding and grounding
- Electromagnetic shielding
- Potential equalization
- Ex rated

Frame dimensions

mm/kg

The frame variants below are a limited selection. For the full range of frames and configurations, please visit [roxtec.com](https://www.roxtec.com).



Product	Frame openings	Packing space	External dimensions W x H x D	Aperture dimensions w x h	Weight	Art. no
G 6x1 Ex GALV	1	120 x 180	252.5 x 350 x 60	147.5(+5/-5) x 245(+5/-5)	4	EXG006000000115
G 6x2 Ex GALV	2	120 x 180	383 x 350 x 60	278(+5/-5) x 245(+5/-5)	7.3	EXG006000000215
G 6x3 Ex GALV	3	120 x 180	513.5 x 350 x 60	408.5(+5/-5) x 245(+5/-5)	9.8	EXG006000000315
G 6x1 Ex AISI316	1	120 x 180	252.5 x 350 x 60	147.5(+5/-5) x 245(+5/-5)	4.8	EXG006000000121
G 6x2 Ex AISI316	2	120 x 180	383 x 350 x 60	278(+5/-5) x 245(+5/-5)	7.3	EXG006000000221
G 6x3 Ex AISI316	3	120 x 180	513.5 x 350 x 60	408.5(+5/-5) x 245(+5/-5)	9.8	EXG006000000321



Sealing components

Sealing components



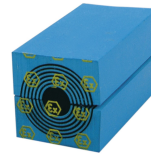
Lubricant



Wedge & Wedgekit Ex



RM Ex solid compensation module



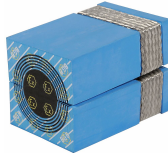
RM Ex module with Multidiameter™



Stayplate Ex



Wedge & Wedgekit ES Ex



RM BG™ Ex module with Multidiameter™



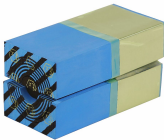
RM BG™ Ex solid compensation module



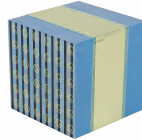
RM ES Ex module with Multidiameter™



RM ES Ex solid compensation module



RM PE Ex module with Multidiameter™



RM PE Ex solid compensation module



Ex sealing kit

For detailed information, please visit [roxtec.com](https://www.roxtec.com).

The product information provided by Roxtec does not release the purchaser of the Roxtec system, or part thereof, from the obligation to independently determine the suitability of the products for the intended process, installation and/or use. Roxtec gives no guarantee for the Roxtec system or any part thereof and assumes no liability for any loss or damage whatsoever, whether direct, indirect, consequential, loss of profit or otherwise, occurred or caused by the Roxtec systems or installations containing components not manufactured by an authorized manufacturer and/or occurred or caused by the use of the Roxtec system in a manner or for an application other than for which the Roxtec system was designed or intended. Roxtec expressly excludes any implied warranties of merchantability and fitness for a particular purpose and all other express or implied representations and warranties provided by statute or common law. User determines suitability of the Roxtec system for intended use and assumes all risk and liability in connection therewith. In no event shall Roxtec be liable for indirect, consequential, punitive, special, exemplary or incidental damages or losses. The Roxtec products are offered and sold in accordance with the conditions of the Roxtec General Terms of Sales. The latest version of the Roxtec General Terms of Sales can be downloaded from <https://www.roxtec.com/en/about-us/about-roxtec/general-terms-of-sales/>. We reserve the right to make changes to the product and technical information without further notice. Any errors in print or entry are no claims for indemnity. The content of this publication is the property of Roxtec International AB and is protected by copyright. This document was generated on: 2024-04-27